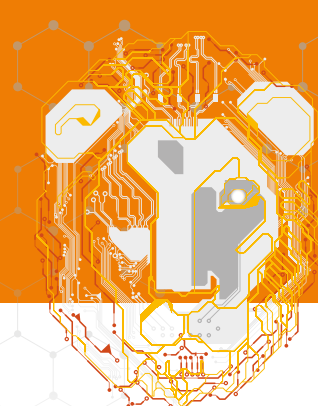




# LION – LINE MANAGER

Your Digital Gate To Manufacturing



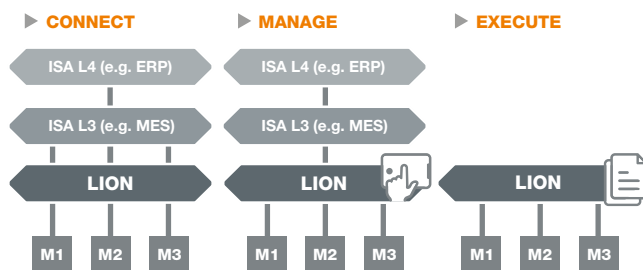
LION is a flexible, scalable solution for the common challenges of line connectivity and control systems. The customizable framework supports a variety of topologies for production lines. Also superordinate systems such as an MES can be connected. All connections are executed via standardized interfaces.

## SITUATION

- How much time is spent creating and summarizing of line batch reports?
- Which are the necessary KPIs for the effective control and optimization of the lines?
- How many problems do operators face when dealing with different user interfaces and how much training is required?
- How many different interface technologies are in use?

## BENEFITS

- Through a data-centric approach across all units or machines, all data is centrally located for the line in one place, eliminating the need for manual consolidation and preparation of information. This allows you to save up to 20% of your time.
- Standardized transfer of consolidated data to superordinate systems for effective preparation and calculation of KPIs—line-related or cross-line with multiple line managers.
- One user interface: central visualization of the entire production line.
- Standard interfaces: Data integrity through harmonization interface technologies between different systems.
- Potential for process optimization: Make more out of your data and optimize your batch change, changeover, OEE with new technologies—data analysis and mixed reality.



The most commonly used standard versions of the Line Manager

## CONTACT

**Frederik Thiele**  
Product Manager  
Phone: +49 721 6634 357

